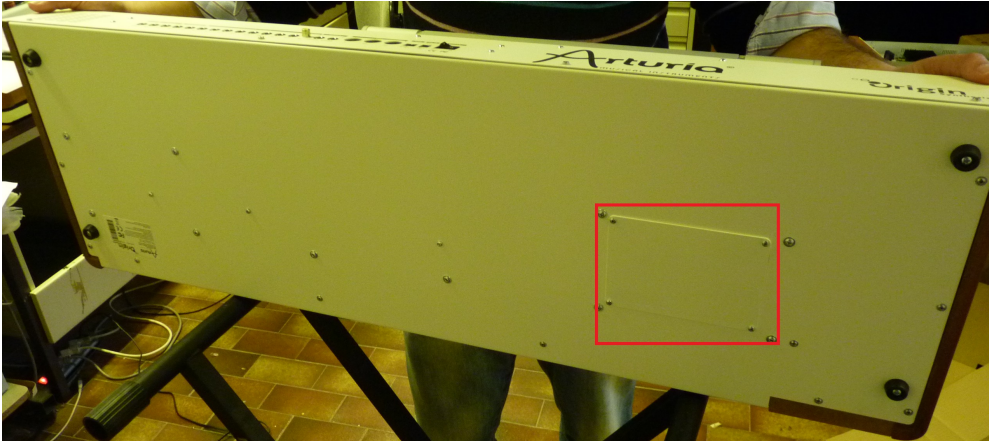
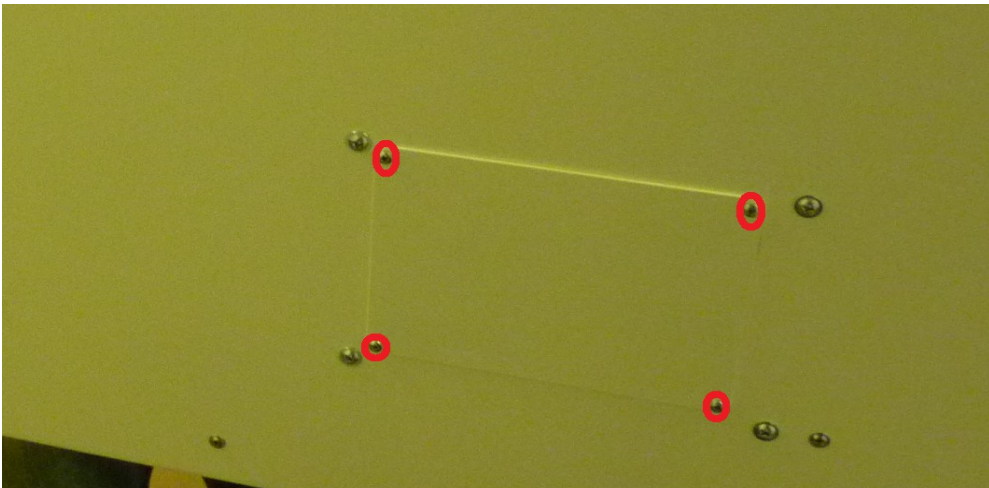


How To remove the Keybed from ORIGIN Keyboard

1/ Put the unit on the Front in order to let you see the plate



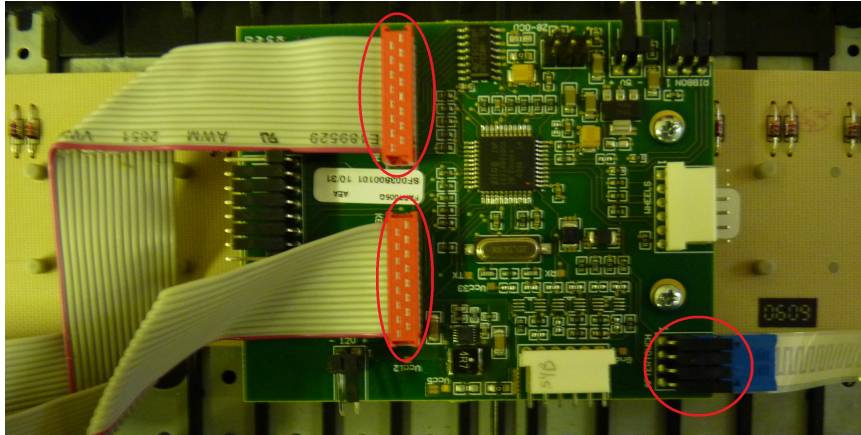
2/ Use a screwdriver to remove the four screws



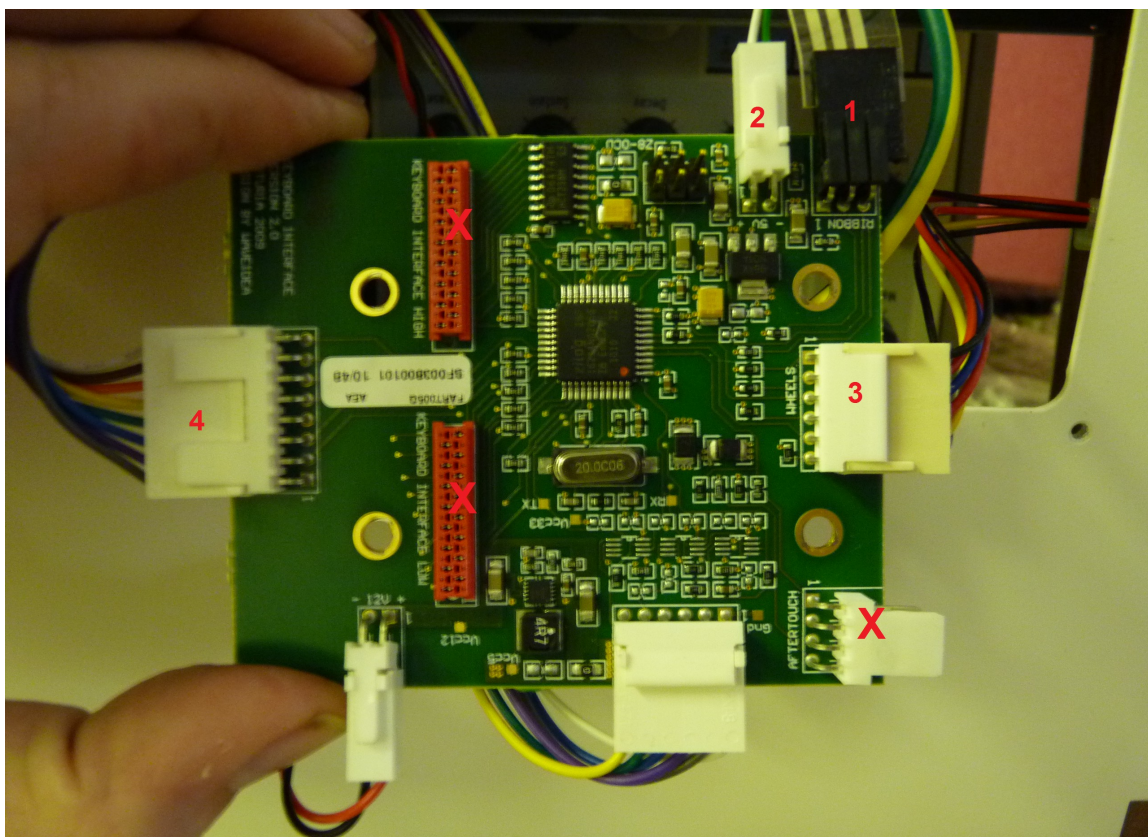
Remove the Metal plate

3/ Before Moving the Keybed make sure to remove connection 1,2,3,4 from the keyboard card.

IMPORTANT:
Don't remove these 3 connection cables

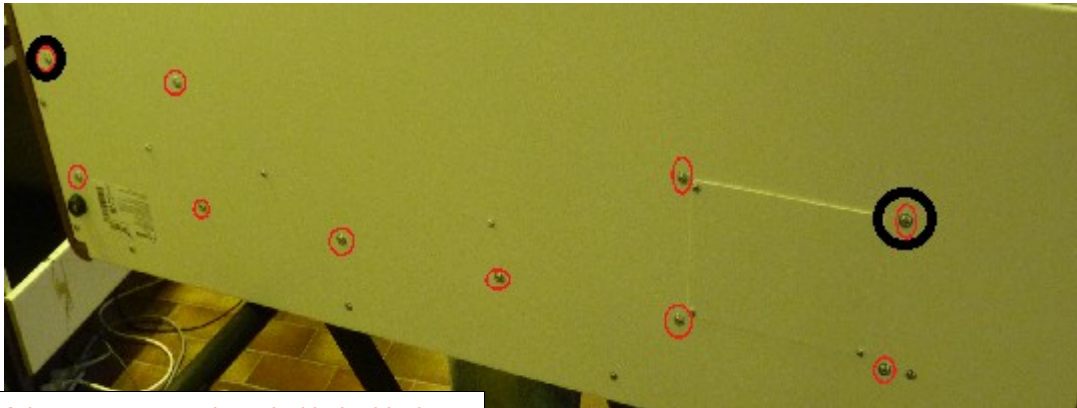


Here is what you see when open the Metal plate:



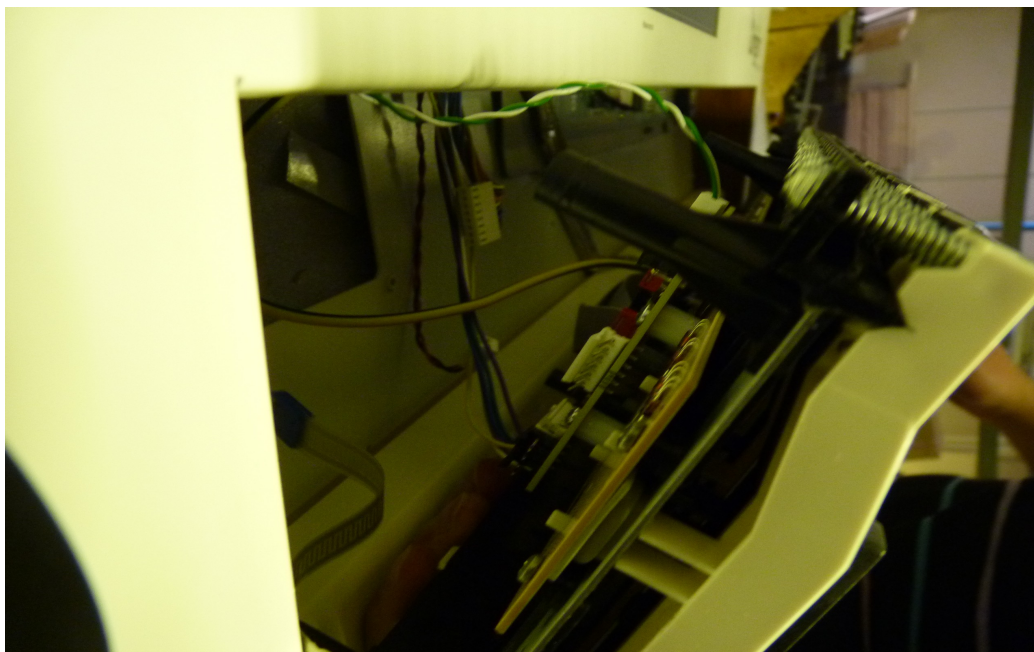
Unplug connection 1,2,3,4

4/ To remove the keybed, you need to unscrew all the 10 large screw.



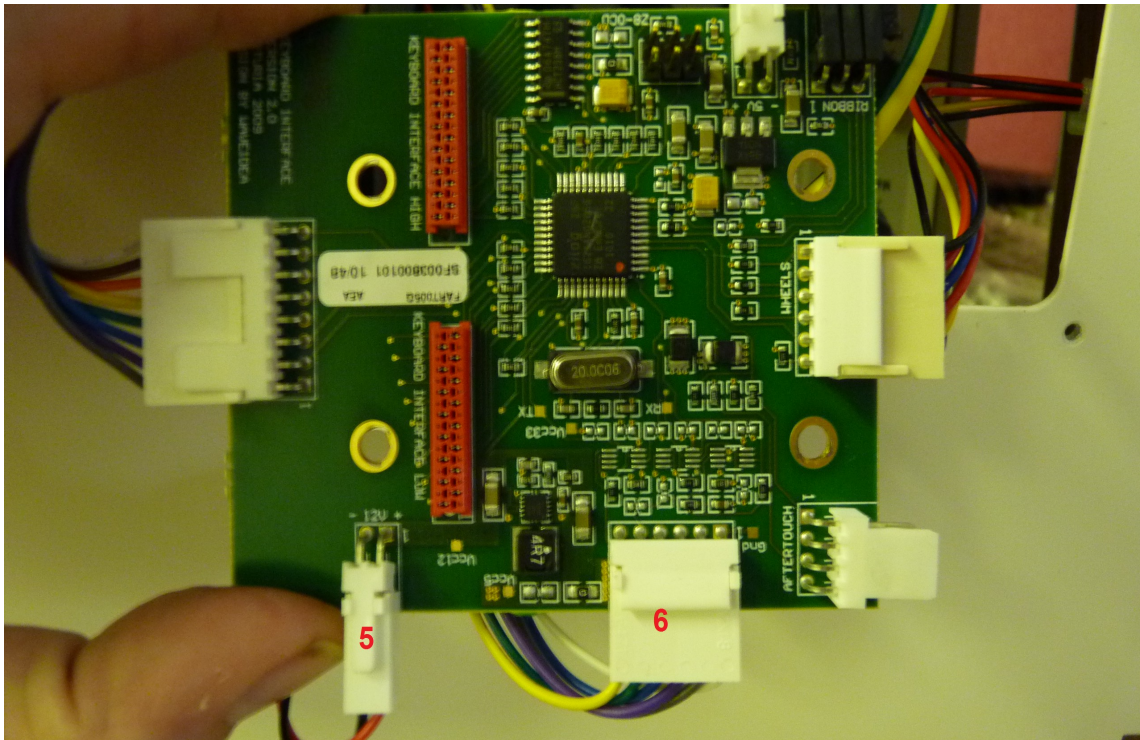
Make sure to correctly end with the black rounded screw, this will maintain the KeyBed when you'll operate on it.

5/ Remove the KeyBed

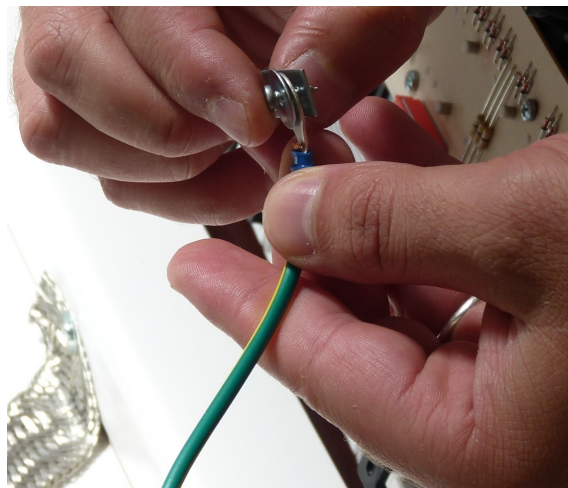
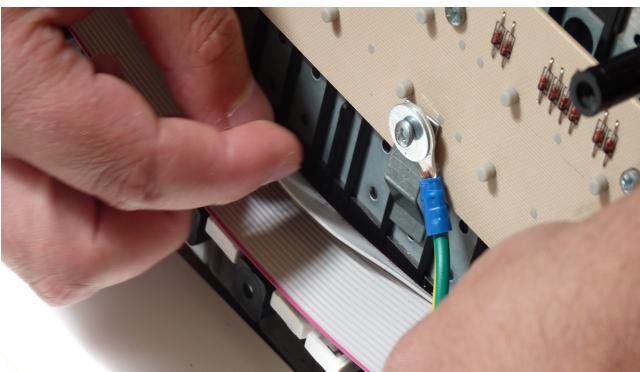


Put your finger beside the keybed to avoid any drop

6/ Completely get out the keybed, unplug connection 5,6



7/ Remove the mass cable



8/ Now the Keybed is completely removed so you can see the rear card and the fan

