

	KeyLab firmware Update	Technical note 01
		Version 1.0
		Date 21/06/13
		Page 1/1

Description

This note details the steps to update the KeyLab controller firmware.

Equipment needed

- 🕒 KeyLab Firmware Update ==> <http://www.Arturia.net/downloads/keylab/>
- 🕒 The KeyLab Midi Control Center ==> <http://www.Arturia.net/downloads/keylab/>
- 🕒 One USB cable
- 🕒 One Keylab



WARNING

Depending on your keyboard (KeyLab 25, KeyLab 49, KeyLab 61) you have to use the corresponding version of the firmware to update your MIDI controller:

- KeyLab 25 ==> eg: KeyLab_25_firmware.bin
- KeyLab 49 ==> eg: KeyLab_49_firmware.bin
- KeyLab 61 ==> eg: KeyLab_61_firmware.bin

If you put the Wrong Firmware in KeyLab, this is reversible.

How to know if my Firmware is not the correct one:

I put a **KeyLab 49/KeyLab 61 Firmware** on a **25 KeyLab Keyboard**

Symptom: Error pads recognition

I put a **KeyLab 25 Firmware** on a **61 KeyLab 49/KeyLab Keyboard**

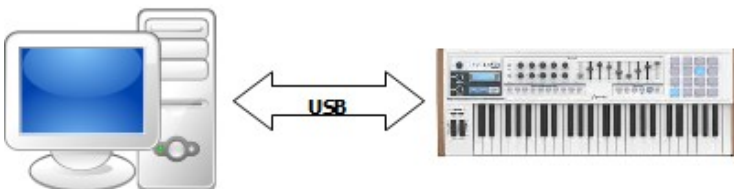
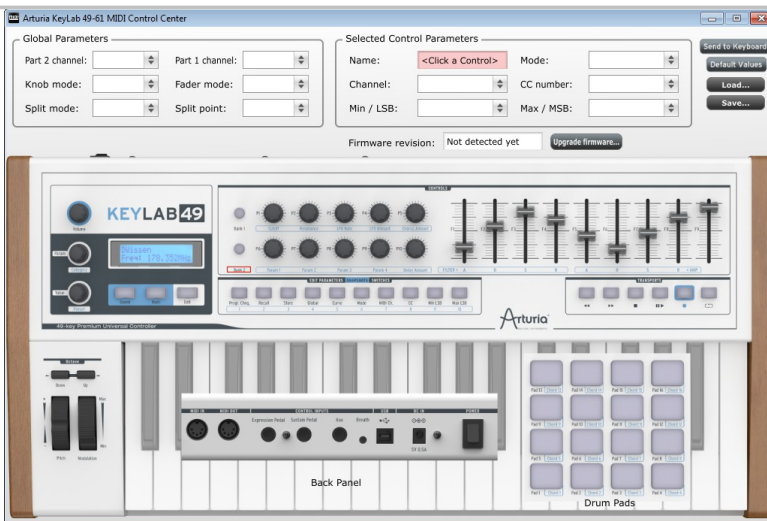


Symptom: Only 25 keys will be used and the pads will send inadequate values and will not be functional.

I put a **KeyLab 49 Firmware** on a **KeyLab 61 Keyboard**

Symptom: There is a shift of 3 or 9 semi-tones

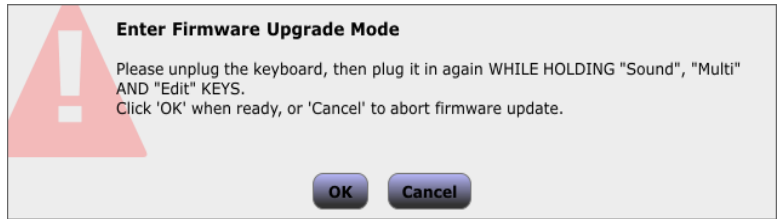
I put a **KeyLab 61 Firmware** on a **KeyLab 49 Keyboard**

Symptom: There is a shift of 3 or 9 semi-tones

STEP	DESCRIPTION	SCREENSHOT
1	Download the Latest Firmware	
2	Plug the KeyLab	
3	Launch the Midi Control Center	
4	<p>Wait until the keyboard has been recognized by the Computer. The MCC will prompt the Version of the Firmware or the message :</p> <p>"Keyboard Problem</p> <p>The keyboard has not been detected"</p>	<div> Firmware revision: 1.24 </div> <div>  </div>
5	Click on Upgrade Firmware button	

6

Follow the instruction of the reboot alert.



7

1. Unplug the KeyLab
2. Hold the "Sound", "Multi", "Edit" key



3. Plug the KeyLab
4. Wait during **5** seconds.
5. The "Update" Message is showing on the Screen



8

Click "OK" on the "reboot alert", and choose the Firmware file

(previously downloaded)

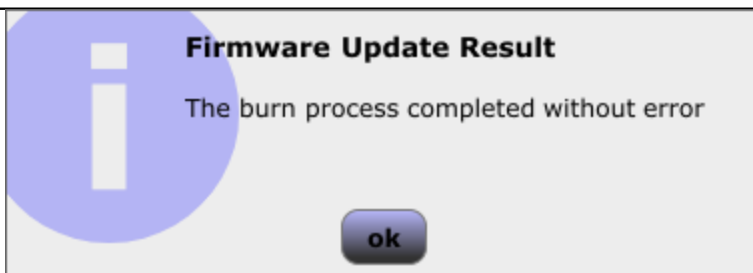
Example:

`KeyLab49_v124.bin`

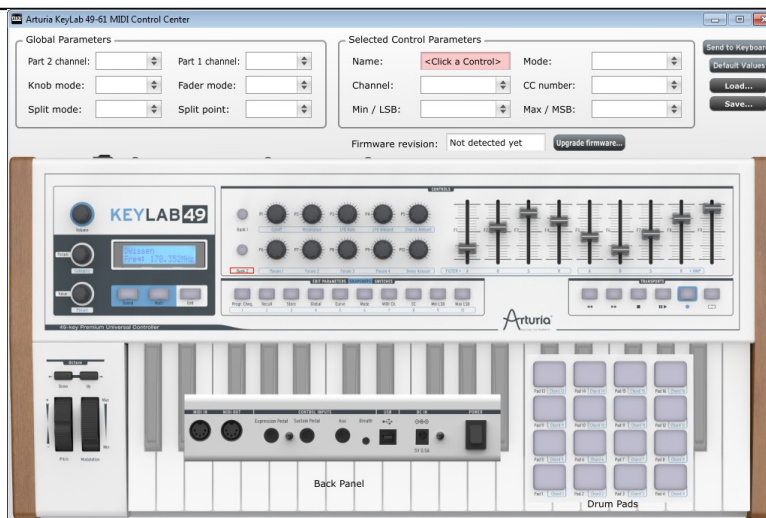
9 Progress bar...



10 Confirmation message (Click 'OK')



12 Close the Midi Control Center.



13 Reset to default

1. Press both octave buttons
2. Power up the keyboard