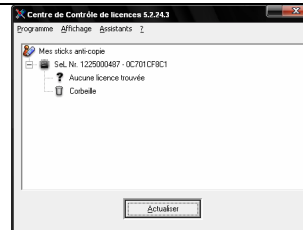


Syncrosoft "Soft-eLicenser" protection system

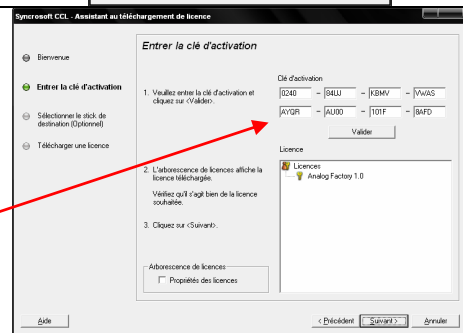
As opposed to the 1.x versions that used the Syncrosoft "USB-eLicenser" hardware dongle, Analog Factory 2.0 uses the Syncrosoft "Soft-eLicenser" full-software solution when newly installed[†]. Avoiding the use of a USB port, this system associates the synthesizer directly with the targeted machine, which must be connected to the Internet during the authorization process.^{††}

Once your digital workstation is connected to the Internet, here's the authorization process:

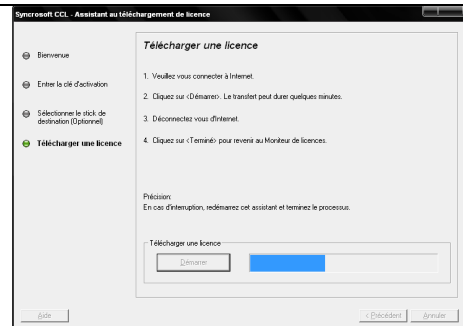
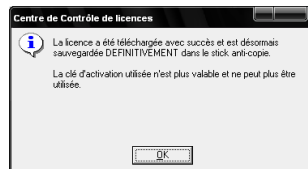
1. Launch the Syncrosoft License Control Center (SLCC). You should see a "SeL" software dongle installed onto your computer. Go to *Wizard*, then *License Download*, then click *Next*.



2. Enter the 32-digit Activation Code when prompted. This code is written on the credit-card-sized plastic insert attached to your User's Manual. Click on *Validate* to see if the license is a correct one (1.0 is compatible) Then click *Next*.

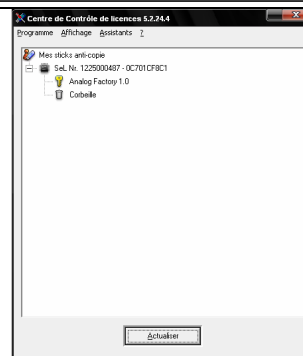


3. The SLCC is now ready to download the software license that will allow you to use the Analog Factory 2.0 / Experience. Click on *Start*, the progress bar should animate until download completion. A popup window will confirm, just click *OK*, then *Finish*.



4. Now the main License Control Center window should show your Analog Factory license installed and activated.

It's now time to launch the Analog Factory synthesizer and have deep oscillations!



[†]Upgrade

In case of upgrading from Analog Factory 1.x to Analog Factory 2.x, the installation program recognizes the installed hardware dongle automatically, and from there the upgrade operation is then relatively transparent.

^{††}License transfer

Since version 5.4.0.0 of the Syncrosoft License Control Center, the software license can easily be transferred from the "Soft-eLicenser" onto an "USB-eLicenser" hardware dongle, allowing installing and (one-at-a-time) use Analog Factory on several machines; this system is integrated in the License Control Center and available through its wizards.