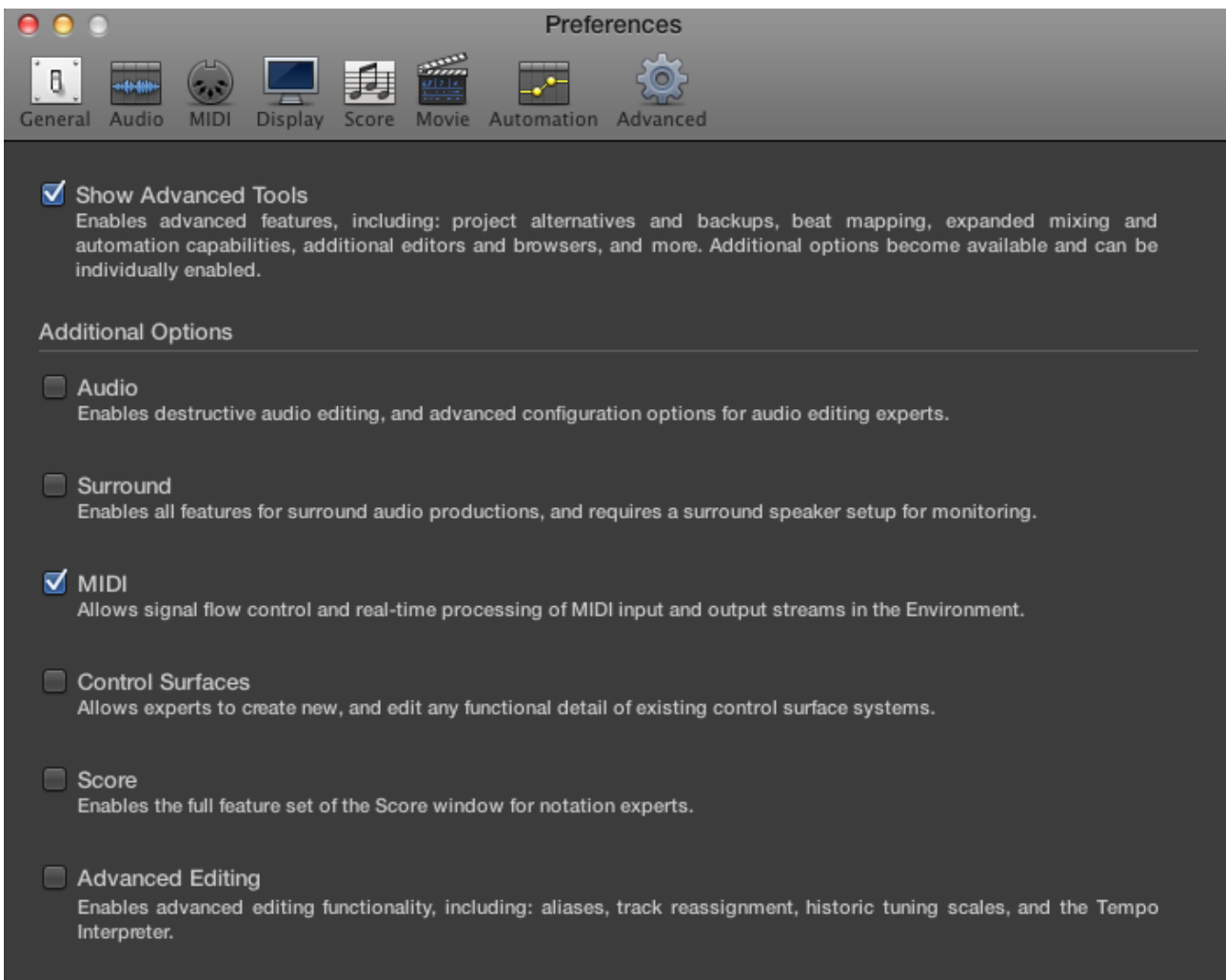


Working with Spark in Logic X

1 . In Logic X preferences

- Go to the preferences section and check “show advanced tools” and “midi



2 . Midi environment settings

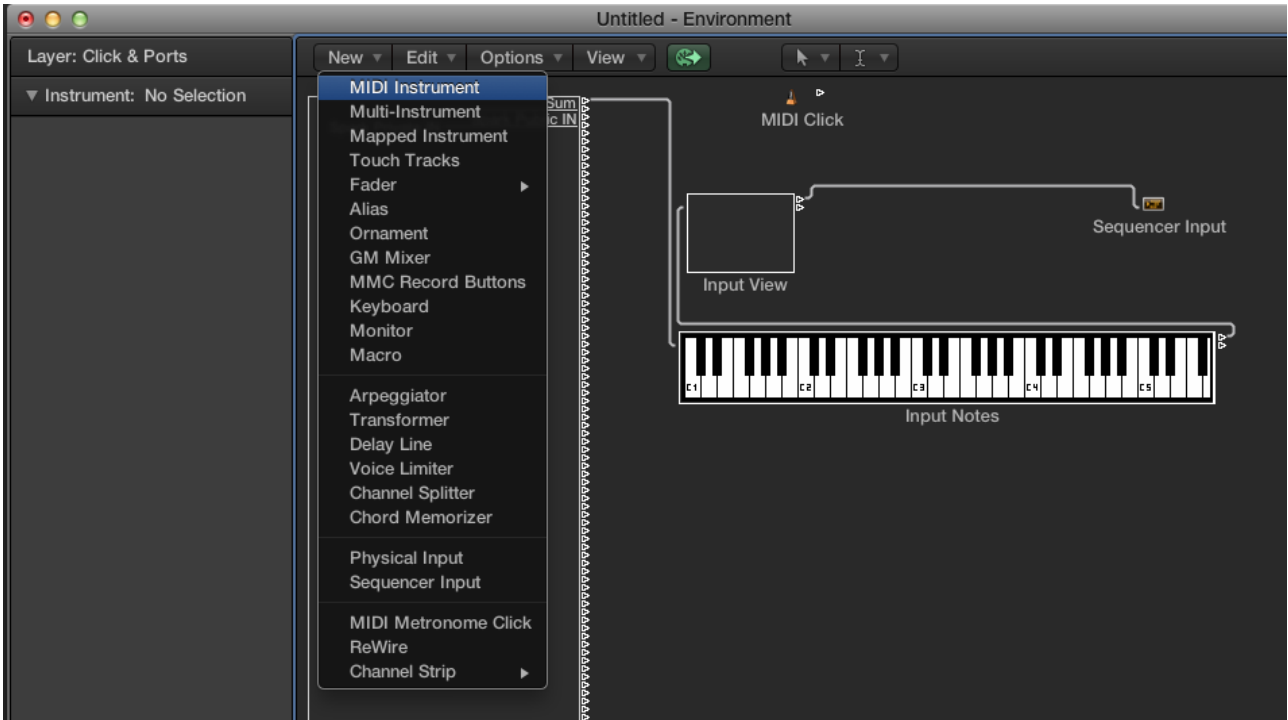
- Open the “MIDI Environment” windows (command + 0)

Window	1	Help
Minimize		⌘M
Zoom		
Cycle Through Windows		⌘`
Bring All to Front		
Open Main Window		⌘1
Open Mixer		⌘2
Open Smart Controls		⌘3
Open Piano Roll		⌘4
Open Score Editor		⌘5
Open Step Editor		
Open Event List		⌘7
Open Signature List		
Open Project Audio		⌘8
Open MIDI Transform		⌘9
Open MIDI Environment		⌘0
Open Transport Float		
Show Event Float		⌘E
Show Region Inspector Float		⌘R
Show Musical Typing		⌘K
Show Step Input Keyboard		⌘⌘K
Show All Plug-in Windows		V
● Untitled - Environment		
✓ Untitled - Tracks		

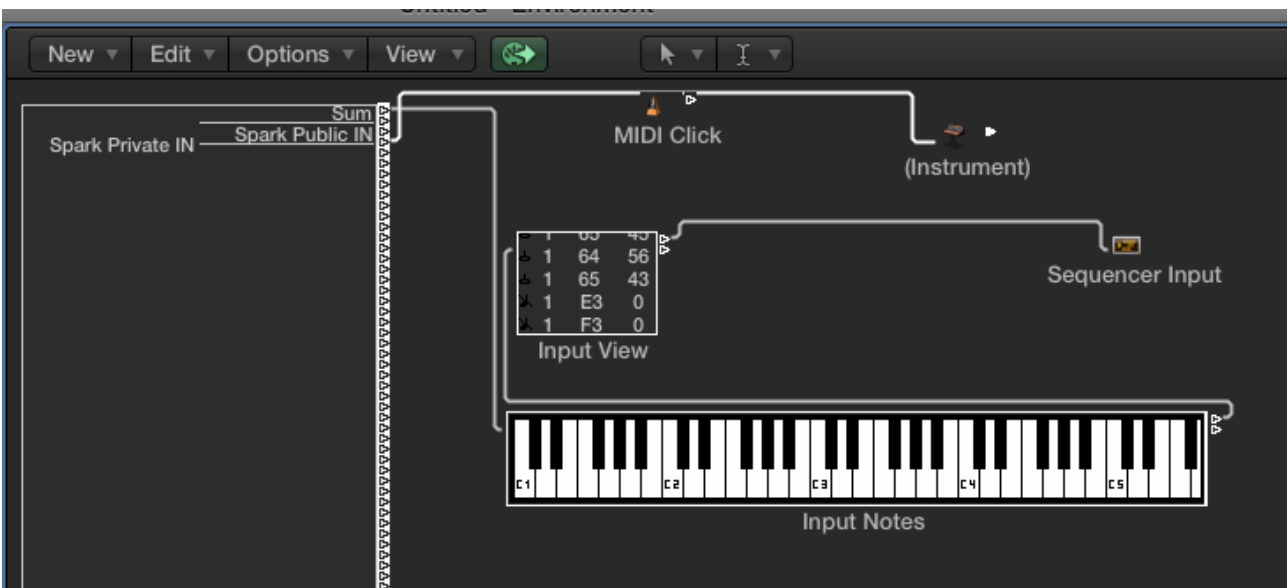
- Select "click & ports" layer on the top left



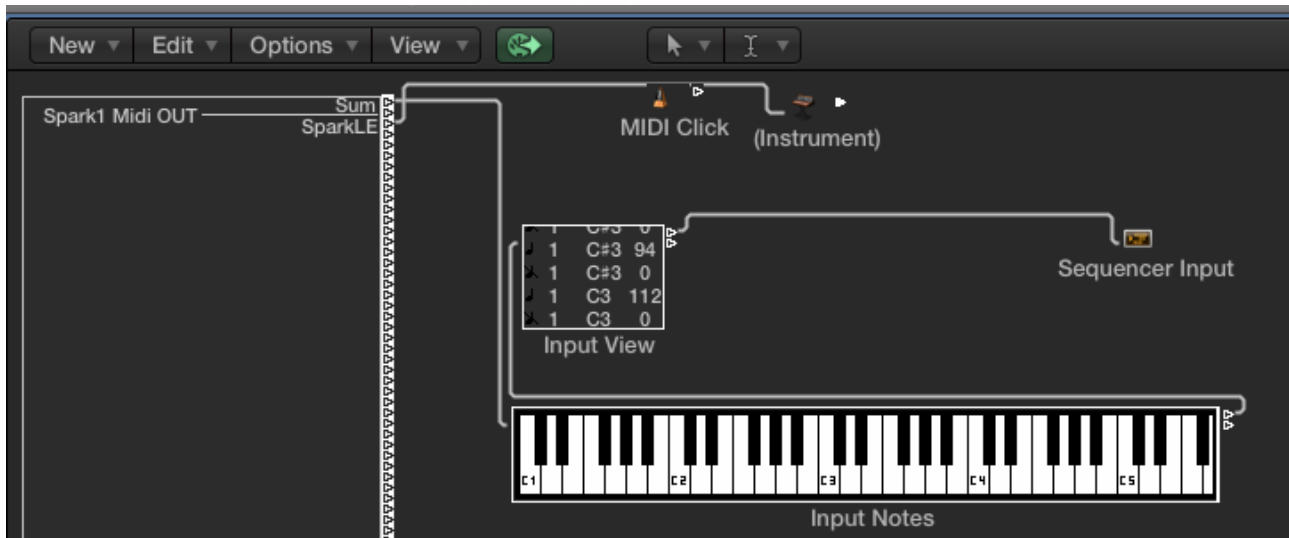
- Create a new "MIDI instrument"



- Connect "Spark Private IN" to the new instrument created.



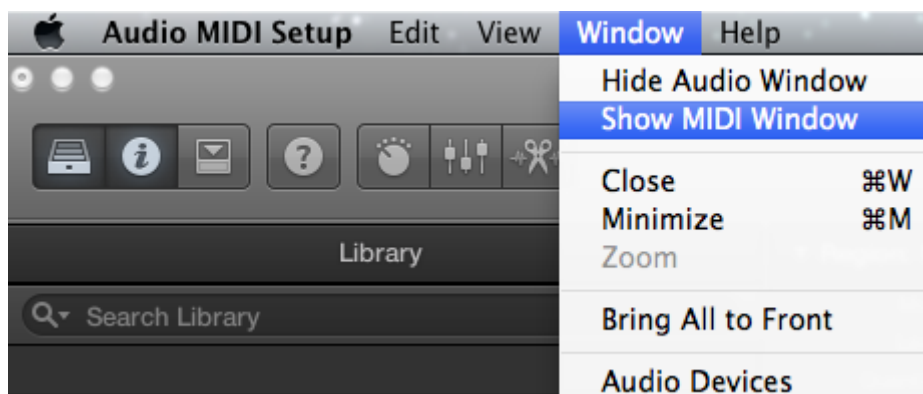
- With a sparkle you should have this :



- Shut down Logic X

3 . Audio MIDI Setup

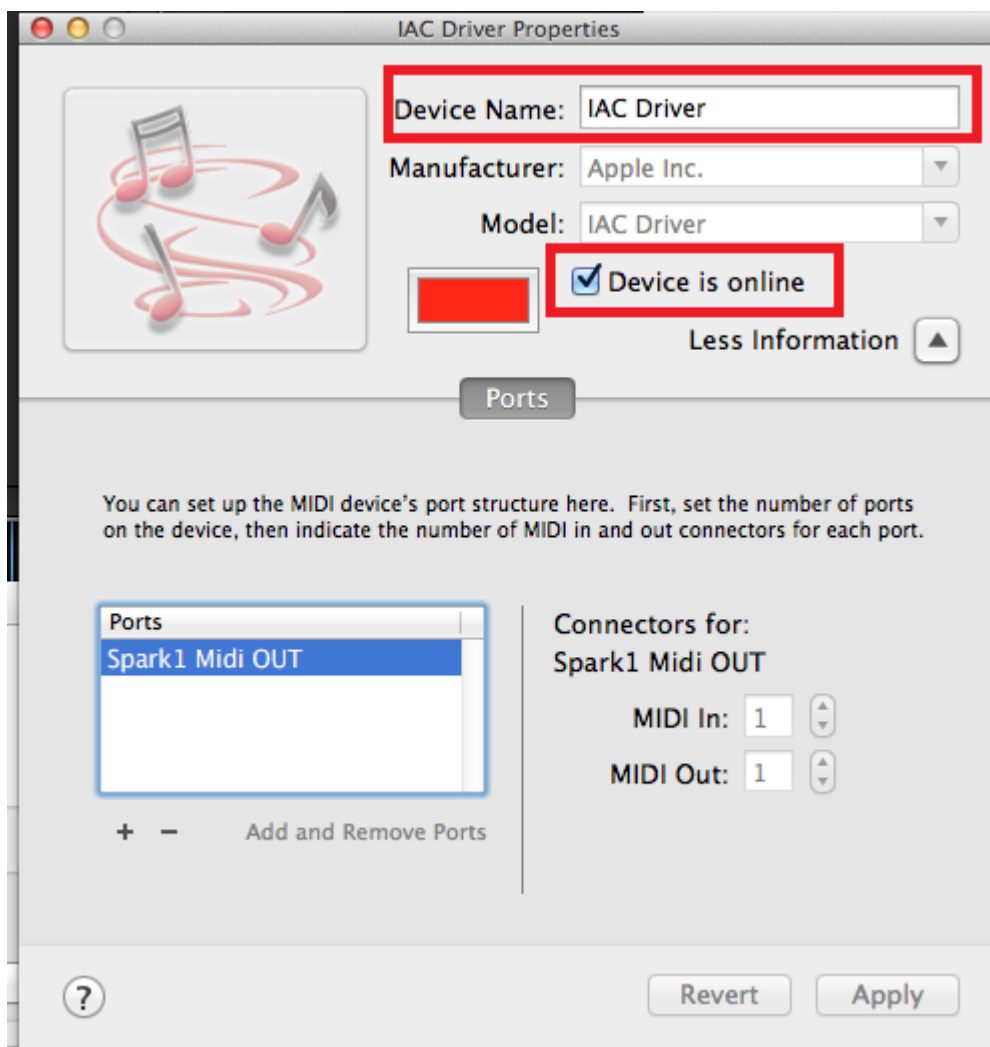
- Open "Audio MIDI Setup" and go to window and check "Show MIDI Window"



- Click on "IAC Driver" Icon



-Create a new port called "Spark1 Midi OUT"



4 . Spark preferences

- Open the “top” view of Spark and open preferences
- Check “Send Midi from sequencer” and “Send Midi from Pads”
- If you don’t have “Yes:Uses “IAS Driver Spark1 Midi OUT” to record the midi double check your IAC driver name.
- Close Spark and Logic X.

