

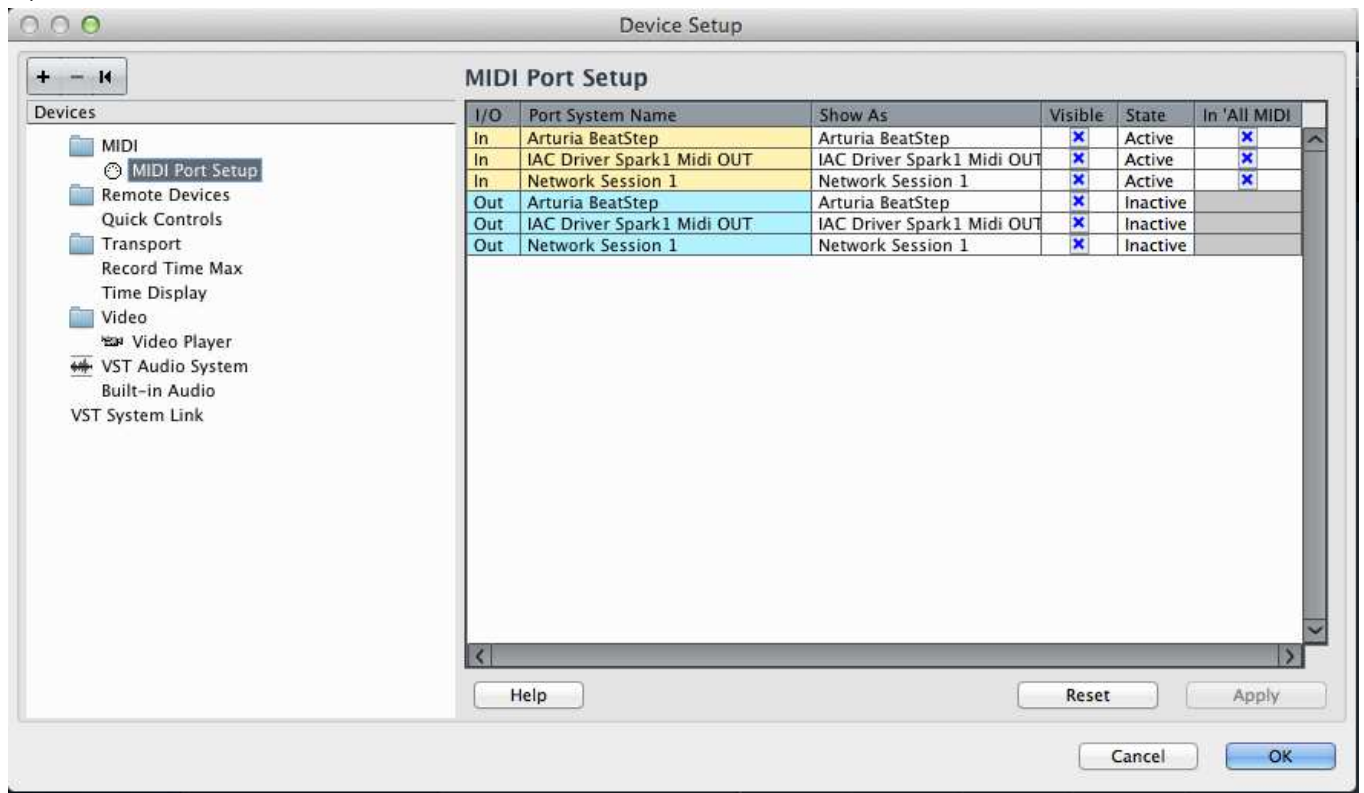
Using BeatStep as a slave in Cubase

In order to synchronize your BeatStep with Cubase first press 'EXT SYNC' button on your controller.



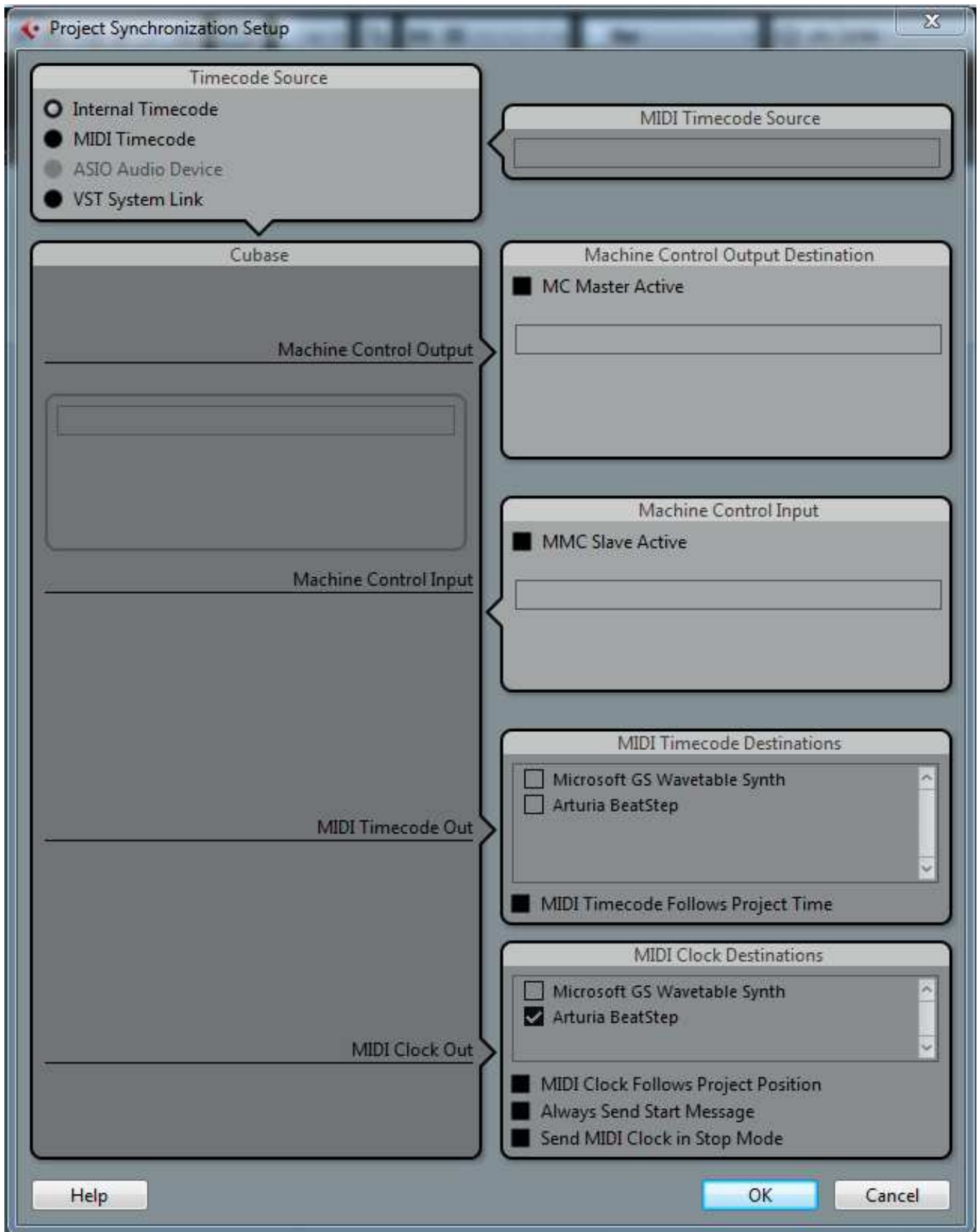
Device Setup in Cubase

- Go to 'Devices' then click on 'Device Setup'
- Check that in 'MIDI port setup' your Beat Step is checked and is in Active State.



Project Synchronization Setup

- Go to 'Transport'
- Click on 'Project Synchronization Setup'
- Please check BeatStep under MIDI clock destination menu.



Hitting play in Cubase should now launch BeatStep sequencer.